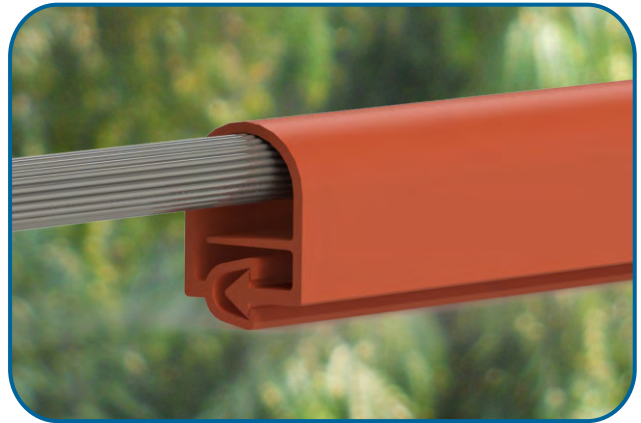
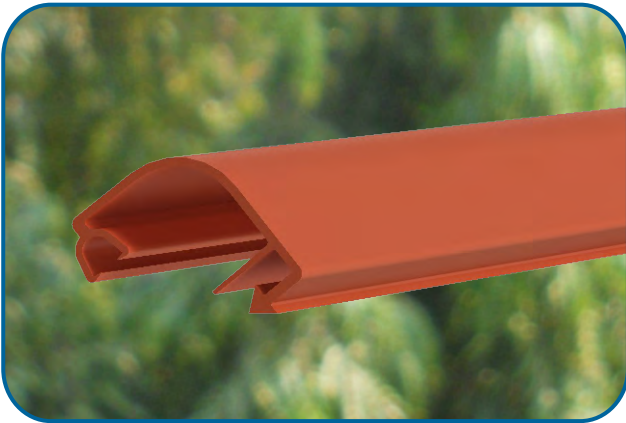


## Overhead Line Cover:



Insulcover is a Wrap Around Line Cover that provides retrofit insulation for Overhead Conductors to help prevent electrical outages caused by trees or wildlife coming into the contact with distribution lines. It is manufactured from high quality Non-tracking Cross-linked Polyolefin material. Gala Overhead Line Covers can be used in many applications upto 66 kV.

Insulcover is designed to insulate existing bare lines without costly conductor replacement expenditure or additional line hardware.

Installation is easy by using the Split Insulation Tube Tool which remains stationary at single location.

### Features & Benefits :

- ❖ High Di-electric strength
- ❖ Excellent UV stabilized & Weather resistant
- ❖ Passed 5000 Hrs. UV test
- ❖ Tracking & Erosion resistant
- ❖ Prevent Conductor from Chemical corrosion effected by strong acid, alkali, salt, etc.
- ❖ Halogen free, Flame retardant
- ❖ Insulcover is available in five sizes that covers conductors up to 800 sq. mm.
- ❖ GOC comes with Mastic for high voltage applications

### Technical Specification\*

PROPERTY	VALUE	TEST METHOD
Tensile Strength	9 N/mm <sup>2</sup> (Mpa) (min.)	ASTM D638
Ultimate Elongation	250 % (min)	ASTM D638
Density	1.20 ± 0.2 gm/cm <sup>3</sup>	ASTM D792
Hardness	40 ±5 Shore D	ASTM D2240
Water absorption	0.5 % (max.)	ASTM D570
Heat Shock (90°C for 4 hrs.)	No Cracking	ASTM D2671
Flame Retardant	Pass	ASTM D2671
Low Temperature Flexibility (-40°C for 4 hrs.)	No Cracking	ASTM D2671
Continuous Temperature Limit	-45 to +105°C	IEC 216
Dielectric Strength	20 kV/mm.(min)	ASTM D149
Volume Resistivity	1 x 10 <sup>13</sup> Ohm.cm (min)	ASTM D257
Dielectric constant	5 (max.)	ASTM D150
UV Resistance (5000 Hrs.)	No Colour Change	ASTM G154
Resistant to Tracking & Erosion	No Tracking, Erosion or Flame failure up to 3.25 kV for 20 min.	ASTM D2303

\* The above mentioned values are typical analytical values obtained on material when tested as per applicable standards under controlled laboratory conditions and should not be construed as specifications for the product.

### Selection Chart:

Gala Code	Conductor Size Sq. mm.	Conductor Size in Dia. (mm)	Packaging (Mtr./Roll)
GOC 1	≤ 99	upto 10	30
GOC 1A	upto 185	upto 15	30
GOC 2	upto 300	upto 22	30
GOC 3	upto 400	upto 28	30
GOC 4	upto 800	upto 38	30

